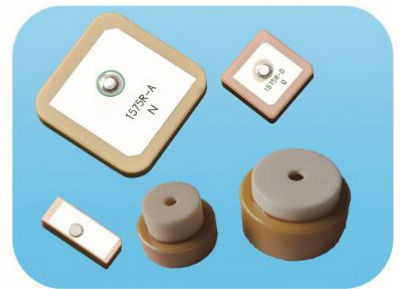
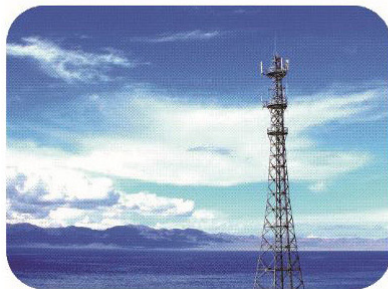
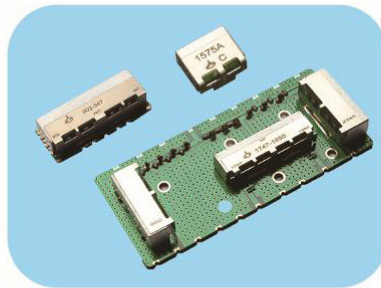
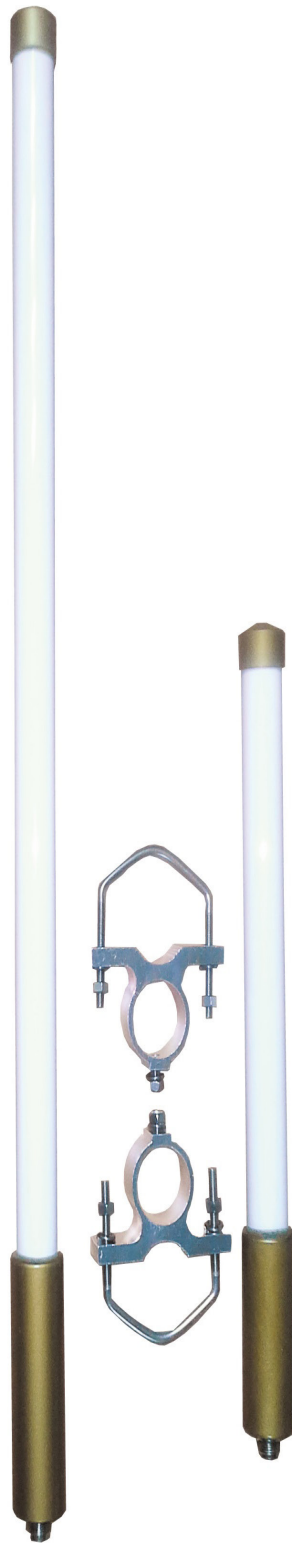


Fiber Glass Antenna



8. Fiber Glass Antenna



Fiber Glass Antenna

OMA-G01



VHF

General Specification	RoLa
Mounting type	N type (F) mount
Dimension	130 cm
Operation temperature	-40 to 85 C
Water Proof	IP67

Electrical Data	RoLa
Working Frequency	902 ~ 928 MHz
Gain	8 dBi
Band Width	26 MHz
VSWR	<1.5 Max.
Input Voltage	
Axial Ratio	
Polarization	Linear
Impedance	50 Ohm
Power	100 W max

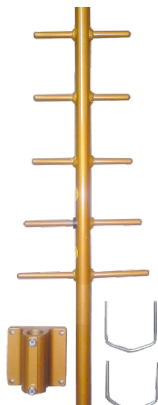
YG-8012



General Specification	UHF
Mounting type	N type (F) mount
Dimension	100 cm
Operation temperature	-40 to 85 C

Electrical Data	UHF
Working Frequency	806 ~ 896 MHz
Gain	11 dBd
Front back ratio	15 dB
VSWR	1.5Max.
Input Voltage	
Axial Ratio	
Impedance	50 Ohm
Power Consumption	

YG-4503



General Specification	
Mounting type	N type (F) mount
Dimension	100 mm
Operation temperature	-40 to 85 C

Electrical Data	
Working Frequency	450 ~ 470 MHz
Gain	7.1 dBd
Front Back Ratio	20 dB
VSWR	1.5 Max.
Input Voltage	
Axial Ratio	
Impedance	50 Ohm
Power Consumption	