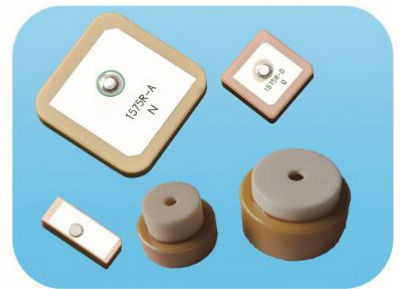
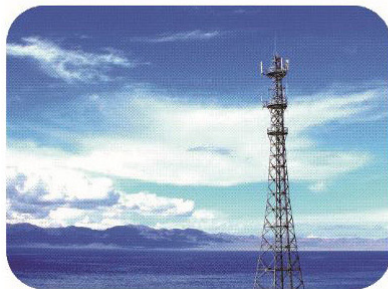
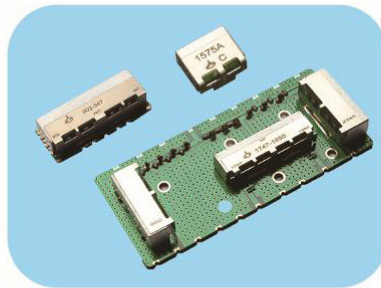


Land Mobile Antenna



5. Land Mobile Antenna

VHF w/PL-259(UHFmale) Connector Mobile Whip Gain Antenna

• Shunt feed DC Ground Design • 200 Watts Power Rating
• 17-7ph Stainless Tapered Whip

| Model | Frequency | Gain | Whip Length | VSWR |
|--|------------|--------|--------------------------|-----------------|
| 5/8 Wave High Gain | | | | |
| PL-150-B | 144-174MHz | 3dBd | 1250x2.5mm | <1.5 over 5MHz |
| HG-1443 | 144-174MHz | 3.4dBd | 1320x3.0mm | <1.5 over 5MHz |
| P-145-V | 144-174MHz | 3.4dBd | 1250x3.0mm | <1.5 over 5MHz |
| MC-1443 | 144-174MHz | 3dBd | 1250x3.0mm | <1.5 over 5MHz |
| M-1443 | 144-174MHz | 3.4dBd | 1250x3.0mm | <1.5 over 5MHz |
| 6/8 Wave High Gain | | | | |
| M-144-3/4-S | 144-174MHz | 4.1dBd | 1400x3.0mm | <1.5 over 5MHz |
| 5/8 over 5/8 High Gain No Ground Plane | | | | |
| M-65D-L | 144-148MHz | 5.5dBd | 2460mm (Total Height) | <1.5 over 5MHz |
| 6/8 Wave C-Load Wide Band No Tuning No Ground | | | | |
| M-41D-C | 144-174MHz | 4.1dBd | 1455mm (Total Height) | <1.5 over 40MHz |
| M-1444-WB | 144-174MHz | 4.1dBd | 1458mm (Total Height) | <1.5 over 12MHz |

VHF w/PL-259(UHFmale) Connector 1/4 Wave Mobile Whip Antenna

| Model | Frequency | Unit | Length | VSWR |
|------------|------------|------|-----------|-----------------|
| PLQ-2 | 136-174MHz | Unit | 520x2.5mm | <1.5 over 20MHz |
| PLQ-2M | 136-174MHz | Unit | 502x2.5mm | <1.5 over 20MHz |
| PLQS-150 | 136-156MHz | Unit | 432x2.5mm | <1.5 over 20MHz |
| PLQS-150-1 | 150-170MHz | Unit | 393x2.5mm | <1.5 over 20MHz |
| PLQS-144 | 134-152MHz | Unit | 458x2.5mm | <1.5 over 20MHz |
| PLQS-144-1 | 148-168MHz | Unit | 420x2.5mm | <1.5 over 20MHz |

Coil Housing and Magnet Base in One Piece

Model 5403-M
 • Covering 142-174 MHz
 • 5/8 Wave 3 dBd Gain
 • VSWR 1.5 Max. Over 5 MHz
 • 200 Watts Power Rating
 • 49" x 0.100" (2.5mm) ph-17-7 Stainless Tapered Whip
 • 3 1/2" (89mm) Magnet
 • 15-ft RG8U Coax. Attached w/PL259 or BNC Connector



⑥

Land mobile Antenna

VHF

GSC-1442



| General Specification | VHF |
|-----------------------|-------------|
| Mounting type | NMO mount |
| Dimension | 1085 mm |
| Operation temperature | -40 to 85 C |
| Water Proof | IP67 |

| Electrical Data | VHF |
|-------------------|-------------|
| Working Frequency | 137~158 MHz |
| Gain | 2.4dB |
| Noise Figure | - |
| VSWR | 1.5 Max. |
| Input Voltage | - |
| Axial Ratio | - |
| Polarization | Linear |
| Impedance | 50 Ohm |
| Power Consumption | - |

GSC-1442S



| General Specification | VHF |
|-----------------------|-------------|
| Mounting type | NMO mount |
| Dimension | 1060 mm |
| Operation temperature | -40 to 85 C |

| Electrical Data | VHF |
|-------------------|---------------|
| Working Frequency | 137 ~ 158 MHz |
| Gain | 2.4 dB |
| Noise Figure | - |
| VSWR | 1.5 Max. |
| Input Voltage | - |
| Axial Ratio | - |
| Polarization | Linear |
| Impedance | 50 ohm |
| Power Consumption | - |

GSC-1552



| General Specification | VHF |
|-----------------------|-------------|
| Mounting type | NMO mount |
| Dimension | 990 mm |
| Operation temperature | -40 to 85 C |

| Electrical Data | VHF |
|-------------------|---------------|
| Working Frequency | 145 ~ 165 MHz |
| Gain | 2.4 dB |
| Noise Figure | - |
| VSWR | 1.5 Max. |
| Input Voltage | - |
| Axial Ratio | - |
| Polarization | Linear |
| Impedance | 50 ohm |
| Power Consumption | - |

Land Mobile Antenna

VHF

GSC1552-S



| General Specification | GPS |
|-----------------------|-------------|
| Mounting type | NMO mount |
| Dimension | 965 mm |
| Operation temperature | -40 to 85 C |

| Electrical Data | VHF |
|-------------------|---------------|
| Working Frequency | 145 ~ 165 MHz |
| Gain | 2.4 dB |
| Noise Figure | - |
| VSWR | 1.5 Max. |
| Input Voltage | - |
| Axial Ratio | - |
| Polarization | Linear |
| Impedance | 50 ohm |
| Power Consumption | - |

GSC-1444_WB



| General Specification | VHF |
|-----------------------|-------------|
| Mounting type | NMO mount |
| Dimension | 1458 mm |
| Operation temperature | -40 to 85 C |

| Electrical Data | VHF |
|-------------------|--------------|
| Working Frequency | 136~ 174 MHz |
| Gain | 4.1 dB |
| Noise Figure | - |
| VSWR | 1.5 Max. |
| Input Voltage | - |
| Axial Ratio | - |
| Polarization | Linear |
| Impedance | 50 ohm |
| Power Consumption | - |



| General Specification | VHF |
|-----------------------|-------------|
| Mounting type | NMO mount |
| Dimension | 1215 mm |
| Operation temperature | -40 to 85 C |

| Electrical Data | VHF |
|-------------------|--------------|
| Working Frequency | 144 ~ 165MHz |
| Gain | 4.1dB |
| Noise Figure | - |
| VSWR | 1.5 Max. |
| Input Voltage | - |
| Axial Ratio | - |
| Polarization | Linear |
| Impedance | 50 ohm |
| Power Consumption | - |

Land Mobile Antenna

GSC-4505-CL



UHF

| General Specification | UHF |
|-----------------------|-------------|
| Mounting type | NMO mount |
| Dimension | 860 mm |
| Operation temperature | -40 to 85 C |

| Electrical Data | UHF |
|-------------------|-------------|
| Working Frequency | 406 490 MHz |
| Gain | 5.5 dB |
| Noise Figure | - |
| VSWR | 1.5 Max. |
| Input Voltage | - |
| Axial Ratio | - |
| Polarization | Linear |
| Impedance | 50 ohm |
| Power Consumption | - |

GSC-4604



| General Specification | UHF |
|-----------------------|-------------|
| Mounting type | NMO mount |
| Dimension | 760 mm |
| Operation temperature | -40 to 85 C |

| Electrical Data | UHF |
|-------------------|---------------|
| Working Frequency | 440 ~ 480 MHz |
| Gain | 4.5 dB |
| Noise Figure | - |
| VSWR | 1.5 Max. |
| Input Voltage | - |
| Axial Ratio | - |
| Polarization | Linear |
| Impedance | 50 ohm |
| Power Consumption | - |

GSC-4604-S



| General Specification | UHF |
|-----------------------|-------------|
| Mounting type | NMO mount |
| Dimension | 780 mm |
| Operation temperature | -40 to 85 C |

| Electrical Data | UHF |
|-------------------|---------------|
| Working Frequency | 440 ~ 480 MHz |
| Gain | 4.5 dB |
| Noise Figure | - |
| VSWR | 1.5 Max. |
| Input Voltage | - |
| Axial Ratio | - |
| Polarization | Linear |
| Impedance | 50 ohm |
| Power Consumption | - |

Land Mobile Antenna

UHF

GSC-4504-CL



| General Specification | UHF |
|-----------------------|-------------|
| Mounting type | NMO mount |
| Dimension | 560 mm |
| Operation temperature | -40 to 85 C |

| Electrical Data | UHF |
|-------------------|---------------|
| Working Frequency | 406 ~ 510 MHz |
| Gain | 4 dB |
| Noise Figure | - |
| VSWR | 1.5 Max. |
| Input Voltage | - |
| Axial Ratio | - |
| Polarization | Linear |
| Impedance | 50 ohm |
| Power Consumption | - |

GSC-4453-S



| General Specification | UHF |
|-----------------------|-------------|
| Mounting type | NMO mount |
| Dimension | 340 mm |
| Operation temperature | -40 to 85 C |

| Electrical Data | UHF |
|-------------------|--------------|
| Working Frequency | 406 ~ 470MHz |
| Gain | 3 dB |
| Noise Figure | - |
| VSWR | 1.5 Max. |
| Input Voltage | - |
| Axial Ratio | - |
| Polarization | Linear |
| Impedance | 50 ohm |
| Power Consumption | - |

GSC-4002-S-WB



| General Specification | UHF |
|-----------------------|-------------|
| Mounting type | NMO mount |
| Dimension | 305 mm |
| Operation temperature | -40 to 85 C |

| Electrical Data | UHF |
|-------------------|--------------|
| Working Frequency | 350~ 450 MHz |
| Gain | 2.4 dB |
| Noise Figure | - |
| VSWR | 1.5 Max. |
| Input Voltage | - |
| Axial Ratio | - |
| Polarization | Linear |
| Impedance | 50 ohm |
| Power Consumption | - |

LTE Mobile Antenna

GSC-2430



GSC-2427



GSC-2430-N



LTE

| General Specification | LTE |
|-----------------------|-------------------|
| Mounting type | NMO mount |
| Dimension | D: 57 mm H: 140mm |
| Operation temperature | -40 to 85 C |
| Water Proof | IP67 |

| Electrical Data | LTE |
|-------------------|--|
| Working Frequency | 690 ~ 60 MHz 1700 ~ 1990 MHz 2100 ~ 2700 MHz |
| Gain | 6-13 dBi at 690 ~ 960 MHz 7 dBi at 1700 ~ 1990 MHz 4 ~ 8 dBi at 2100 ~ 2700 MHz2 |
| Polarization | Linear |
| VSWR | 2.5 Max. |
| Impedance | 50 Ohm |

| General Specification | LTE |
|-----------------------|------------------|
| Mounting type | NMO mount |
| Dimension | D: 40 mm H: 83mm |
| Operation temperature | -40 to 85 C |
| Water Proof | IP67 |

| Electrical Data | LTE |
|-------------------|--|
| Working Frequency | 690 ~ 60 MHz 1700 ~ 1990 MHz 2100 ~ 2700 MHz |
| Gain | 6-13 dBi at 690 ~ 960 MHz 7 dBi at 1700 ~ 1990 MHz 4 ~ 8 dBi at 2100 ~ 2700 MHz2 |
| Polarization | Linear |
| VSWR | 2.5 Max. |
| Impedance | 50 Ohm |

| General Specification | LTE |
|-----------------------|-------------------|
| Mounting type | NMO mount |
| Dimension | D: 57 mm H: 140mm |
| Operation temperature | -40 to 85 C |
| Water Proof | IP67 |

| Electrical Data | LTE |
|-------------------|--|
| Working Frequency | 690 ~ 60 MHz 1700 ~ 1990 MHz 2100 ~ 2700 MHz |
| Gain | 6-13 dBi at 690 ~ 960 MHz 7 dBi at 1700 ~ 1990 MHz 4 ~ 8 dBi at 2100 ~ 2700 MHz2 |
| Polarization | Linear |
| VSWR | 2.5 Max. |
| Impedance | 50 Ohm |

LTE Mobile Antenna

GSC-2427-N



LTE-101



LTE-101



LTE

| General Specification | LTE |
|-----------------------|------------------|
| Mounting type | NMO mount |
| Dimension | D: 40 mm H: 83mm |
| Operation temperature | -40 to 85 C |
| Water Proof | IP67 |

| Electrical Data | LTE |
|-------------------|-------------------------------|
| Working Frequency | 690 ~ 60 MHz |
| | 1700 ~ 1990 MHz |
| | 2100 ~ 2700 MHz |
| Gain | 6-13 dBi at 690 ~ 960 MHz |
| | 7 dBi at 1700 ~ 1990 MHz |
| | 4 ~ 8 dBi at 2100 ~ 2700 MHz2 |
| Polarization | Linear |
| VSWR | 2.5 Max. |
| Impedance | 50 Ohm |

| General Specification | LTE |
|-----------------------|--------------|
| Mounting type | N-Type mount |
| Dimension | 300 x 25 mm |
| Operation temperature | -40 to 85 C |

| Electrical Data | LTE |
|-------------------|-------------------------------|
| Working Frequency | 690 ~ 60 MHz |
| | 1700 ~ 1990 MHz |
| | 2100 ~ 2700 MHz |
| Gain | 6-13 dBi at 690 ~ 960 MHz |
| | 7 dBi at 1700 ~ 1990 MHz |
| | 4 ~ 8 dBi at 2100 ~ 2700 MHz2 |
| Polarization | Linear |
| VSWR | 2.5 Max. |
| Impedance | 50 Ohm |

| General Specification | LTE |
|-----------------------|-------------|
| Mounting type | SMA mount |
| Dimension | 25 mm |
| Operation temperature | -40 to 85 C |

| Electrical Data | LTE |
|-------------------|-------------------------------|
| Working Frequency | 690 ~ 60 MHz |
| | 1700 ~ 1990 MHz |
| | 2100 ~ 2700 MHz |
| Gain | 6-13 dBi at 690 ~ 960 MHz |
| | 7 dBi at 1700 ~ 1990 MHz |
| | 4 ~ 8 dBi at 2100 ~ 2700 MHz2 |
| Polarization | Linear |
| VSWR | 2.5 Max. |
| Impedance | 50 Ohm |